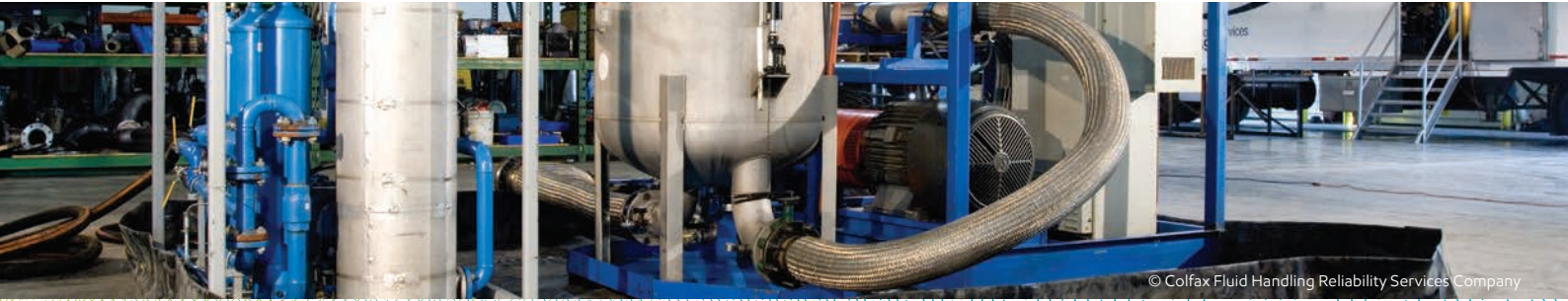


Integrated lubrication services

Filtration and contamination control solutions



© Colfax Fluid Handling Reliability Services Company

Energy lives here™

▶ Expert engineers inspect critical equipment systems for abnormal operating conditions, evaluate on-site conditions, and provide recommendations and corrective actions.

Description

Engineers review your lubricants to identify compatibility situations and determine current machinery conditions. They evaluate the compatibility of recommended replacement fluids with current fluids and machine components. Then, they suggest operational and design improvements to maximize equipment and lubricant life.

Application

Expert engineers will work with you to:

- Review and note normal and abnormal operating conditions
- Identify units in immediate need of corrective actions
- Recommend portable filtration, reclamation or change-out and flushing
- Identify excessive oil makeup requirements
- Consult on correction of system conditions
- Report results and recommend corrective actions

Potential benefits



Maximized drain intervals
minimize oil consumption and
disposal costs



Enhanced equipment
availability



Improved operating
efficiencies



Consolidation of
lubricants



Enhanced equipment
component life



Minimized maintenance
costs

Filtration and contamination control solutions



Deliverable: An Engineering Service Report includes an assessment of the systems inspected, results of the lubrication samples analyzed and the recommended actions to address the contamination, along with an estimated value of the service. Distribute and present the completed report to plant management and key personnel.

Common opportunity areas

- Contaminated lubricant (solvents, wrong oils, water, dirt, metalworking fluids)
- Temperatures too high or too low
- Aeration of oil (foaming)
- Pressures too high (hydraulics)
- Restriction in pump suction (cavitation/aeration)
- Leakage rates too high/low oil levels
- Use of wrong lubricants
- Grease compatibility problems

Safety, health and environment

Field engineers are attuned to the hazards of handling, storing and using petroleum products. They strictly observe safety and environmental rules, and ExxonMobil and customer safety practices. They coordinate efforts through designated plant personnel verifying electrical and mechanical lockout and proper tagging prior to working on equipment, and providing recommendations to help reduce hazards.

Industrial
Lubricants



By helping you enhance equipment life and reliability — which minimizes maintenance costs and downtime — our expert services can help you achieve your safety, environmental care and productivity goals.